



MEP Eligibility Overview

Statewide MEP PD
April 2025



Eligibility Defined



Who Qualifies for the MEP?

*A child who made a **qualifying move** as or with/to join/to precede a **migratory agricultural worker** within the preceding 36 months.*

When determining eligibility, we must answer four main questions:

1. Is there a **Migratory Agricultural Worker**?
2. Is there a **Child**?
3. Did the child make a **Qualifying Move**?
4. Did the child make that move **with/as/or to join/to precede** the MAW?



Who is a Migratory
Agricultural Worker?



Migratory Agricultural Worker

An individual who made a qualifying move in the preceding 36 months and, after doing so, ***engaged*** in new temporary or seasonal employment ***soon after*** the move.

OR

An individual who ***actively sought*** such new employment ***and*** has a ***recent history of moves*** for temporary or seasonal agricultural employment.

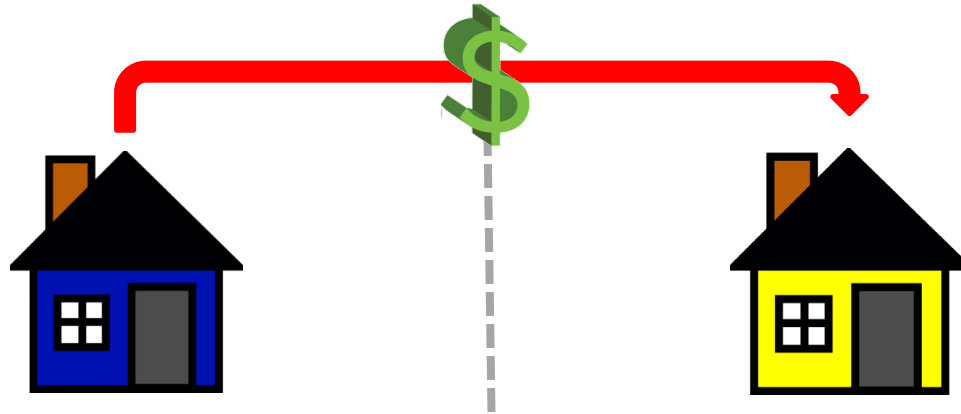


What is a Qualifying Move?



Qualifying Move

A move made for reasons of economic necessity, across school district boundaries, involving a change in residence.





What does *engaged*
mean?

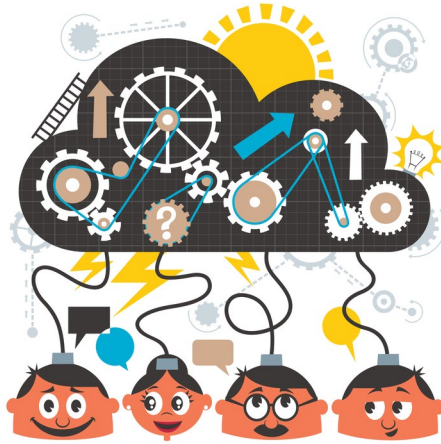


Engaged

The individual must engage in qualifying work soon after the move, meaning he/she must have performed the qualifying agricultural activity in order to be considered a migratory agricultural worker.

Engaged also may refer to participating in a training or orientation.





What does *soon after*
mean?



Soon After

The worker must engage in qualifying work soon after the move in order to qualify as a migratory agricultural worker.
Soon after the move is defined as within 60 days.





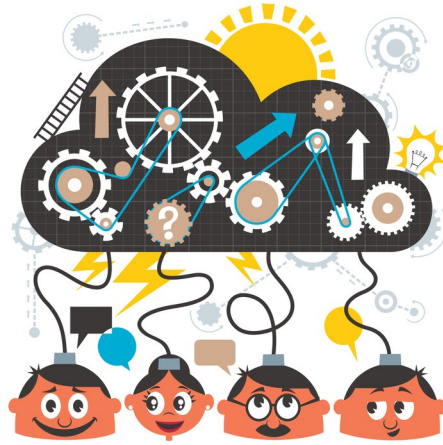
What is Qualifying Work?



Qualifying Work

Temporary or seasonal employment in agricultural or fishing work. Work can be agricultural, fishing, dairy work, or initial processing of raw agricultural products.





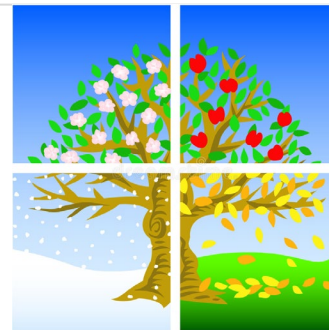
What is the difference between
seasonal and *temporary* ?



Seasonal and Temporary Work

Seasonal Employment: Occurs only during a certain part of the year due to the cycles of nature.

Temporary Employment: Employment that lasts for a limited period of time, usually a few months, but no longer than 12 months. It is determined based on... *Employer Statement, Worker's Statement, or State Documentation.*



*I will work here
for 9 months...*

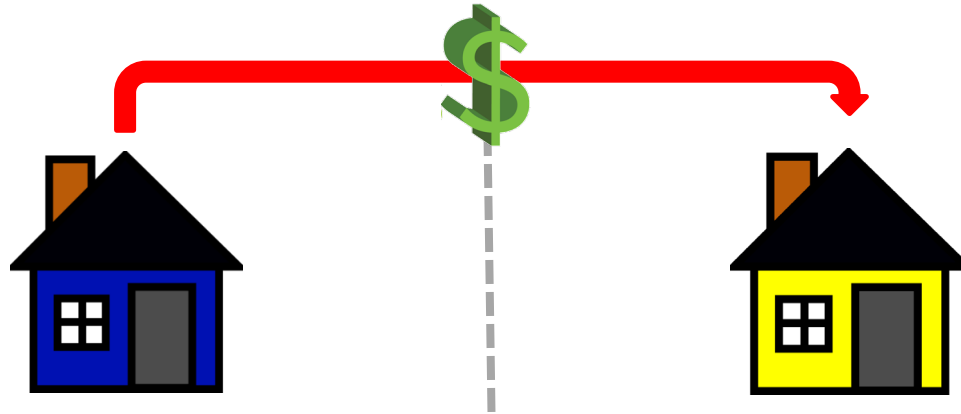


What is a Qualifying Move for a
child?



Qualifying Move

A move made for reasons of economic necessity, across school district boundaries, involving a change in residence.



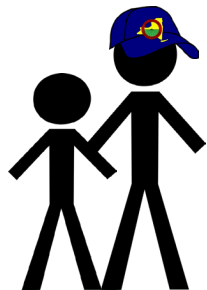


What is the Qualifying Arrival
Date?



Qualifying Arrival Date

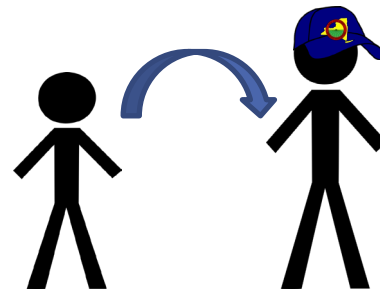
The date that the child and the worker both complete the *qualifying move*. The child must move on his/her own as the worker, or with/to join/to precede the *migratory agricultural worker*. Also the date that begins a *migratory child's* 36 months of eligibility.



With



On Own As



To join/precede



Who is a Migratory Child?



Migratory Child

Meets the definition of a ***child***- An individual who is younger than 22 years of age and is eligible for a free public education.

A child who made a ***qualifying move*** as or with/to join/to precede a ***migratory agricultural worker*** within the preceding 36 months.



Basic Eligibility Scenario



Eligibility Scenario

On July 1, 2024, Elvira moves with her two children, ages 4 and 7, from Houston, TX to Albion, NY to work at Benton Farms. One week after the move, Elvira begins work cutting tomatoes.





Factor 1: Migratory Agricultural Worker

Elvira is a **Migratory Agricultural Worker** because she made a move across school district lines for reasons of economic necessity, and engaged in qualifying work (cutting tomatoes) soon after the move (within 60 days). This moved happened in the past 36 months (July 1, 2024).



Factor 2: Qualifying Move

The children made a **Qualifying Move** because they made a move across school district lines for reasons of economic necessity within the past 36 months (July 1, 2024).



Factor 3: Child

Elvira's children qualify under the MEP definition of **Children** because they are under 22 years of age (4 and 7) and are eligible for a free public education.



Factor 4: Child/Worker Move

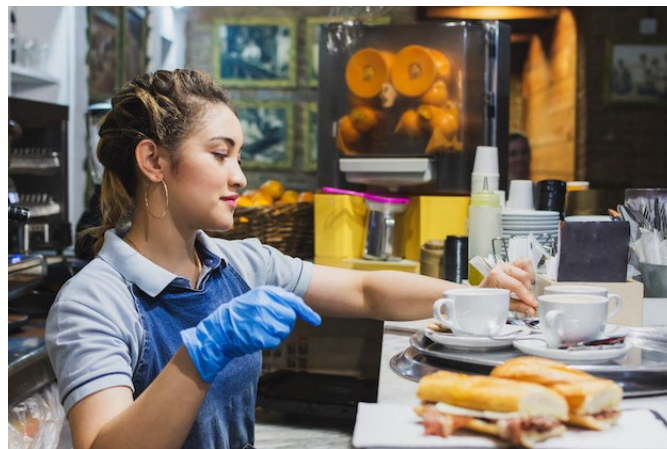
Elvira and her children made the move on the same date (July 1, 2024). Therefore, the children moved **with** a Migratory Agricultural Worker.

Both Elvira's children qualify for MEP services; a recruiter can complete the Certificate of Eligibility (COE)!



Scenario Continued - Subsequent Move

On November 2, 2024, after the end of the tomato season, Elvira and her children move to Lockport, NY to look for new work. Elvira finds a job working in a restaurant soon after the move.





Factor 1: Migratory Agricultural Worker

Elvira is a **Migratory Agricultural Worker** because she made a move across school district lines for reasons of economic necessity, and engaged in qualifying work (cutting tomatoes) soon after the move (within 60 days). This moved happened in the past 36 months (July 1, 2024).



Factor 2: Qualifying Move

The children made a **Qualifying Move** because they made a move across school district lines for reasons of economic necessity within the past 36 months (November 2, 2024).



Factor 3: Child

Elvira's children qualify under the MEP definition of **Children** because they are under 22 years of age (4 and 7) and are eligible for a free public education.



Factor 4: Child/Worker Move

Elvira and her children made the move on the same date (November 2, 2024). Therefore, the children moved **with** a Migratory Agricultural Worker.

Both Elvira's children qualify for MEP services; a recruiter can complete a new COE with a QAD of 11/2/24!



Who Should You Refer to Your Recruiter?

- Any new family or student in your area who is living with or has lived with someone who is currently doing agricultural work, or has done ag work in the past.
- Any current or formerly eligible family or student who moves away and returns, or moves to a different district in your area.
- Families or students in your area who are not currently part of the program, but may have made a move or performed ag work during the past 3 years.



Thank you! Questions?

